

# Conveyors and Systems

Engineering, Design, and Installation Guide



C O N V E Y O R  
S Y S T E M S

# Power Pack...Supplying Integrated Excellence to Help Industry Excel.

For over **90 years**, Power Pack has developed a reputation for helping manufacturers increase productivity, quality, and competitiveness. By applying decades of manufacturing experience in a variety of industries, the latest hardware and software technologies, unique material handling designs, and “out-of-the-box” thinking, Power Pack offers more than material handling products, we offer integrated solutions.

## Low Maintenance

Power Pack’s low pressure sleeves provide simple and virtually maintenance-free low pressure accumulation of pallets and products – all while prolonging roll life.



## High Quality

When you see a Power Pack conveyor or system, you’ll notice these quality features:

- Rugged construction
- User friendly adjustments
- Long lasting interchangeable components
- 2 or 3 year limited warranties
- Concealed bearing mounts for operator SAFETY



## Controls & Software

Power Pack specializes in matching material handling system performance with production requirements by using the latest control, software, computer networking, and Andon technologies. No matter if you need to control the operation of a single conveyor, or an entire facility, Power Pack offers the expertise to provide a practical solution.



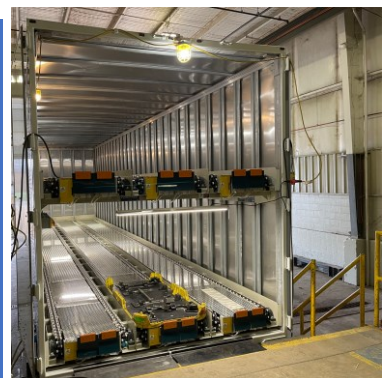
## Systems Integration

Connecting various material handling and processing systems, integrated assembly and quality control stations, and inventory and management operations into a seamless system, is another way Power Pack helps manufacturers meet stringent production goals.



## Just-In-Time

For plant-to-plant loading and unloading of parts for just-in-time delivery requirements, choose Power Pack. A variety of over-the-road trailer mounted conveyors as well as storage, retrieval, and delivery to line set systems are available to meet your needs.



## Continuous Flow

Power Pack's broad manufacturing experience is helping companies increase productivity and quality with specially designed continuous flow assembly lines. These lines feature multi-positioning fixtures; an overhead support structure for tooling, lighting, CRT operator information centers, as well as Andon, and Poka-Yoke systems.



## Poka-Yoke

To improve your process for Six Sigma results, turn to Power Pack for innovative manufacturing and quality control solutions.



## Ergonomic

Let Power Pack show you how to reduce worker fatigue and repetitive motion injuries with work stations that conform to the needs of operators with the proper placement of tools and parts, moveable fixtures to prevent strains, proper working heights, and more.





## Innovative

Power Pack solves unique problems with innovative solutions such as stacker / de-stacker units.



## The Resources to Meet Your Needs

Power Pack offers a broad selection of material handling solutions to meet virtually every need:

### Conveyor Components

If your company is looking to reduce costs by building its own conveyors – these pre-engineered modules are the right choice.

### Welded Construction Conveyors

When specifications call for: “One piece formed body and welded construction throughout,” Power Pack welded construction conveyors are the ones to choose.

### Universal Conveyors

The common frame design used for all 12 models of our Universal conveyors provide economy and durability for today – and quick interchangeability to meet new demands in the future.



## Trailer Mounted Sequencing Conveyors

These unique conveyors are designed to provide fast and efficient plant-to-plant loading and unloading of components for just-in-time delivery to line set.

## Custom Conveyors

Need a special conveyor design? Our over 90 years of experience is available to provide you with a cost effective solution.

## Synchronized, High Throughput, and Storage and Retrieval Systems

Power Pack systems engineers specialize in creating advanced systems to reduce manufacturing and inventory costs while meeting marketing demand.

### Power Pack Conveyor Company

38363 Airport Parkway

- Willoughby, OH 44094
- Phone: 440-975-9955
- Fax: 440-975-0505
- [www.power-packconveyor.com](http://www.power-packconveyor.com)



Power Pack and Power Pack Conveyor Company are trademarks of Power Pack Conveyor Company  
Printed in USA 1277 11011M

## Specific Application and OEM Conveyors

Power Pack offers a wide selection of pre-engineered bulk material handling, part handling, manufacturing and processing conveyors.

- Horizontal Slider Bed
- Horizontal Flanged Belt
- Horizontal "V" Tracking
- Incline
- Cleated Incline
- Cleated Incline with Nose-Over
- Gravity
- Horizontal Belt Over Roller
- Belt Driven Live Roller
- Zero Pressure
- Chain Driven Live Roller
- Skewed Chain Driven Live Roller
- Wire Mesh
- Floor-to-Floor
- Table Top
- Die
- Steel Hinge Belt
- Self-Cleaning
- Flanged Trough
- Corrugated
- Troughing Idler
- Magnetic
- Drag Chain
- Slat
- Bucket
- Belt Curves
- Wash
- Roller Flight